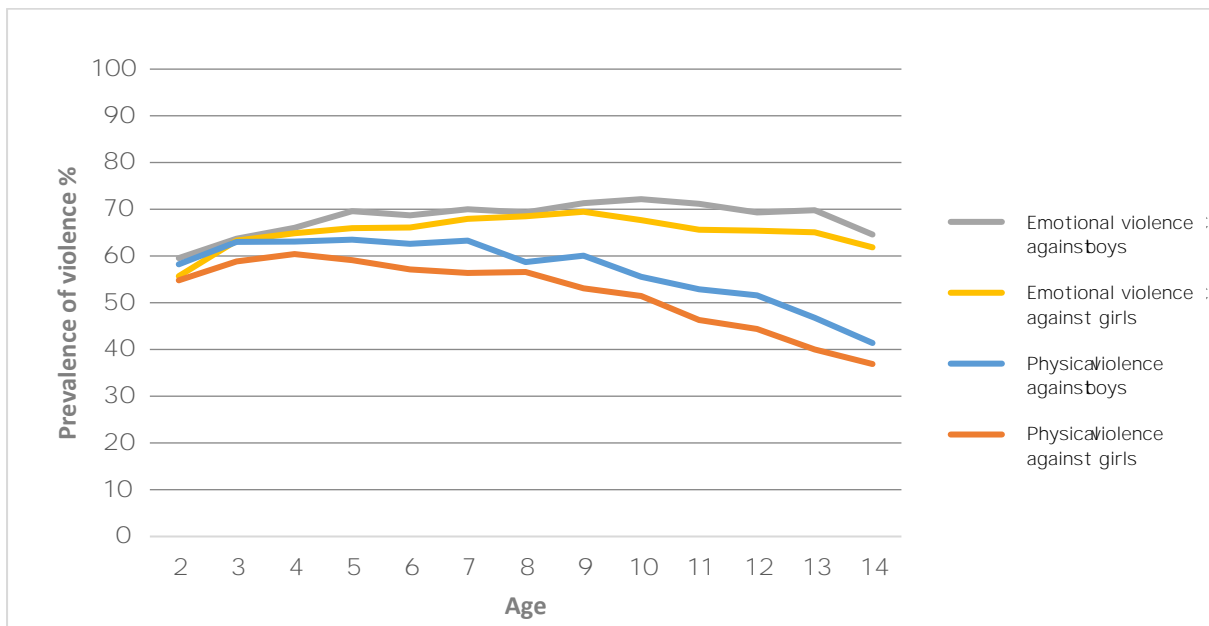
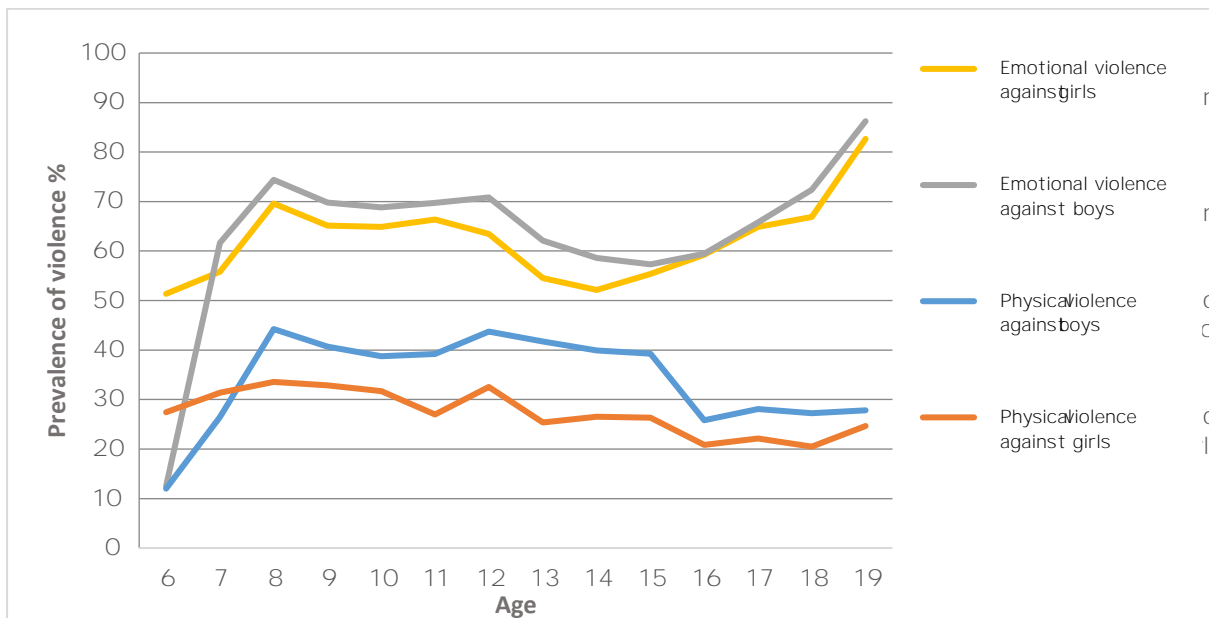


Annex 2. Unadjusted global violence prevalence estimates of violence against children

2.0 Prevalence of physical and emotional violence perpetrated by household members against boys and girls in the past month by age of child (unadjusted global pooled estimates)



2.1 Prevalence of physical and emotional violence perpetrated by adults against boys and girls in the past 12 months by age of child (unadjusted global pooled estimates)



2.2 Physical, emotional and sexual violence perpetrated by intimate or dating partners against girls in the past 12 months by age of girl (unadjusted global pooled estimates, adjusted by population ever had sex only)

