

## Supplemental material

### Parental detection of neonatal jaundice using a low-cost colour card: a multicentre prospective study

Guochang Xue<sup>1</sup>, Huali Zhang<sup>2</sup>, Xuexing Ding<sup>3</sup>, Fu Xiong<sup>4</sup>, Yanhong Liu<sup>5</sup>, Hui Peng<sup>6</sup>, Changlin Wang<sup>7</sup>, Yi Zhao<sup>8</sup>, Huili Yan<sup>9</sup>, Mingxing Ren, Chaoying Ma<sup>1</sup>, Hanming Lu<sup>1</sup>, Yanli Li<sup>2</sup>, Ruifeng Meng<sup>2</sup>, Lingjun Xie<sup>2</sup>, Na Chen<sup>3</sup>, Xiufang Cheng<sup>3</sup>, Jiaojiao Wang<sup>3</sup>, Xiaohong Xin<sup>3</sup>, Ruifang Wang<sup>3</sup>, Qi Jiang<sup>4</sup>, Yong Zhang<sup>4</sup>, Guijuan Liang<sup>5</sup>, Yuanzheng Li<sup>5</sup>, Jianing Kang<sup>5</sup>, Huimin Zhang<sup>5</sup>, Yinying Zhang<sup>6</sup>, Yuan Yuan<sup>6</sup>, Yawen Li<sup>7</sup>, Yinglin Su<sup>7</sup>, Junping Liu<sup>8</sup>, Shengjie Duan<sup>8</sup>, Qingsheng Liu<sup>9</sup>, Jing Wei<sup>9</sup>

1. Department of Paediatrics, Wuxi 9th People's Hospital affiliated to Soochow University, Wuxi, Jiangsu, China.

2. Department of Paediatrics, The People's Hospital of Zhenping, Zhenping, Henan, China.

3. Department of Paediatrics, The People's Hospital of Anyang, Anyang, Henan, China.

4. Department of Paediatrics, Sichuan Provincial Hospital for Women and Children, Chengdu, Sichuan, China.

5. Department of Neonatal, The People's Hospital of Zhengzhou, Zhengzhou, Henan, China.

6. Department of Paediatrics, The Third People's Hospital of Jingzhou, Jingzhou, Hubei, China.

7. Department of Neonatal, Affiliated Children's Hospital of Jiangnan University, Wuxi, Jiangsu, China.

8. Department of Neonatal, Kaifeng Maternal and Child Health Hospital, Kaifeng, Henan, China.

9. Department of Neonatal, Jiaozuo Maternal and Child Health Hospital, Jiaozuo, Henan, China.

**Contents**

Table S1. Methods of bilirubin detection and quality assurance by study location.....	3
Figure S1. Flow chart of study participants.....	4
Figure S2. Age-specific TSB levels.....	5
Table S2. Agreement of JCard scores between parents and paediatricians.....	6

**Table S1 Methods of bilirubin detection and quality assurance by study location**

Study location	platforms for bilirubin measurement	Quality control measures
9th People's Hospital of Wuxi	Beckman AU-5800	The machine was calibrated daily with the manufacturer's controls
People's Hospital of Zhenping	Toshiba TBA-FX8	The machine was calibrated daily with the manufacturer's controls
People's Hospital of Anyang	Beckman AU2700	The machine was calibrated daily with the manufacturer's controls
Sichuan Provincial Hospital for Women and Children	Hitachi Labospect 008AS	The machine was calibrated daily with the manufacturer's controls
People's Hospital of Zhengzhou	Toshiba TBA-FX8	The machine was calibrated daily with the manufacturer's controls
Third People's Hospital of Jingzhou	Beckman AU5821	The machine was calibrated daily with the manufacturer's controls
Wuxi Children's Hospital	Beckman AU5800	The machine was calibrated daily with the manufacturer's controls
Kaifeng Maternal and Child Health Hospital	Mindray BS-2000	The machine was calibrated daily with the manufacturer's controls
Jiaozuo Maternal and Child Care Hospital	Mindray BS-800m	The machine was calibrated daily with the manufacturer's controls

Figure S1 Flow chart of study participants.

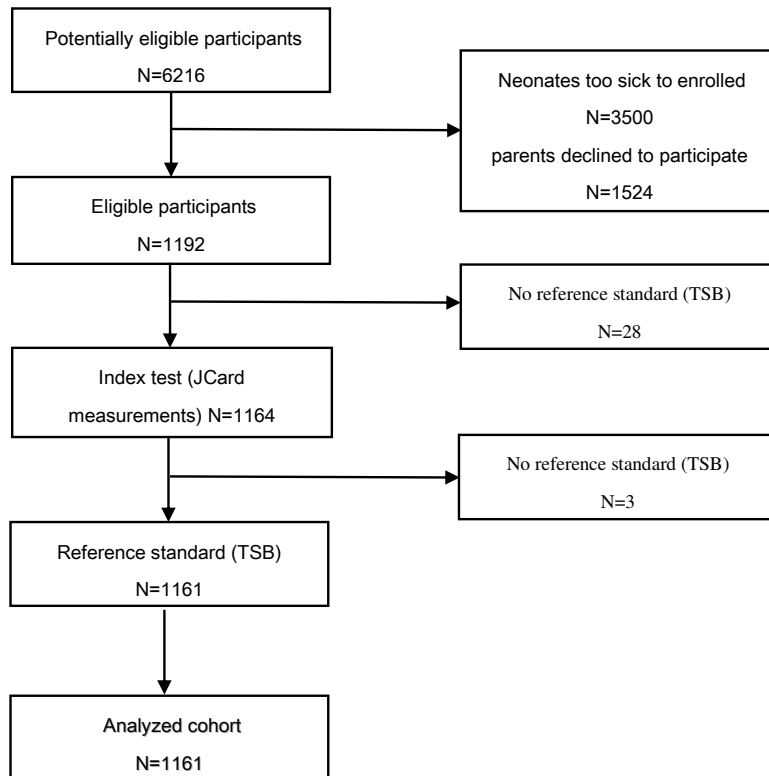
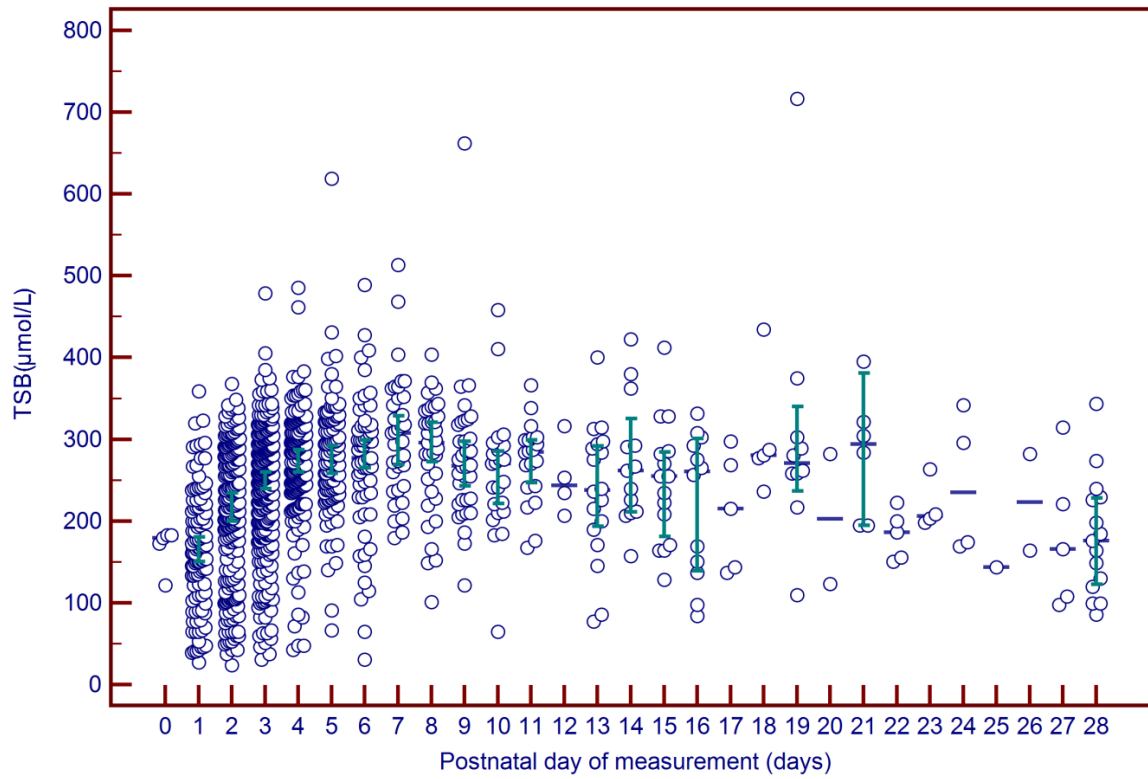


Figure S2 Age-specific TSB levels (median and 95% CI).



**Table S2 Agreement of JCard scores between parents and paediatricians**

Agreement	Number	%
Exact agreement	691	59.5
Within 51.3 $\mu\text{mol/L}$	1,119	96.3
Within 102.6 $\mu\text{mol/L}$	1,158	99.7