

Supplemental Table 1 – Classification of mental disorders

Disorder	ICD9 code
Anxiety disorders	293.84, 300* (with exception of 300.4)
Mood disorders	293.83, 296*, 300.4, 311*, V62.82
Psychosis	293* (with the exception of 293.83), 295*, 298*, 299.9
Personality disorders	301*
Alcohol and substance abuse	291*, 292*, 303*, 304*, 305*
Psychomotor agitation	308.2
Conduct disorders	312*, 313.81
Eating disorders	307.1, 307.5
Adjustment disorders	308* (with the exception of 308.2), 309*
Self-harm/suicidal ideation	V62.84, 983*
Other behavioral disorder	V40.3
<i>Other</i>	

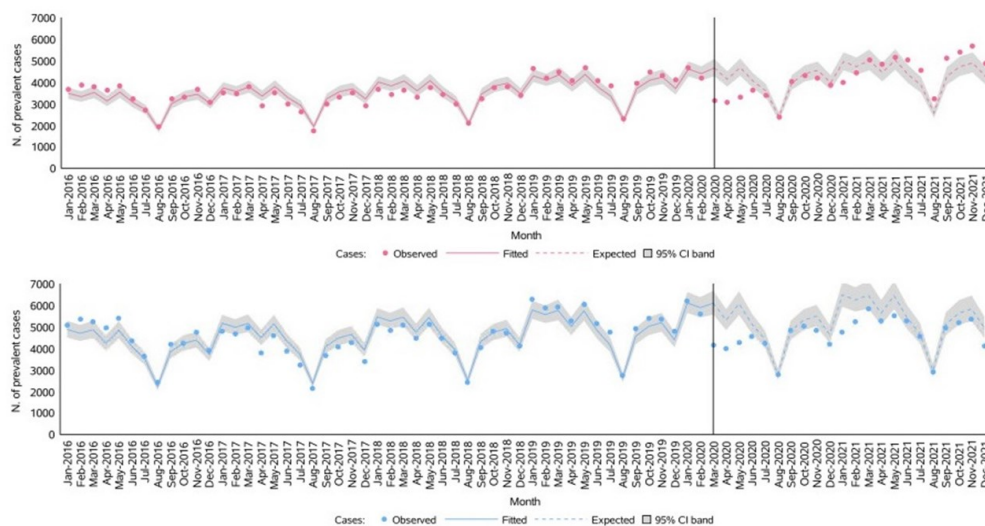
Supplemental Table 2– Percentage distribution of ED accesses due to mental health condition by gender, year and disorder.

	2016	2017	2018	2019	2020	2021	p-value	
Girls								
<i>Total n. accesses</i>	2138	2354	2306	2342	1575	2826	<i>trend</i>	<i>2021 vs 2019</i>
Anxiety disorders	989 (46.3)*	1.028 (43.3)	900 (39.0)	872 (37.2)	527 (33.5)	917 (32.4)	<0.0001	0.0004
Alcohol and substance abuse	292 (13.7)	287 (12.2)	336 (14.6)	418 (17.8)	254 (16.1)	399 (14.1)	0.01	0.0003
Psychosis	214 (10.0)	244 (10.4)	234 (10.1)	206 (8.8)	185 (11.7)	327 (11.6)	0.04	0.68
Eating disorders	56 (2.6)	87 (3.7)	107 (4.6)	109 (4.7)	109 (6.9)	271 (9.6)	<0.0001	<0.0001
Adjustment (stress) disorders	197 (9.2)	199 (8.5)	215 (9.3)	185 (7.9)	106 (6.7)	200 (7.1)	0.0005	0.26
Mood disorders	65 (3.0)	65 (2.8)	70 (3.0)	104 (4.4)	76 (4.8)	171 (6.1)	<0.0001	0.01
Self-harm	67 (3.1)	83 (3.5)	97 (4.2)	81 (3.5)	68 (4.3)	134 (4.7)	0.004	0.02
Psychosomatic disorders	66 (3.1)	102 (4.3)	94 (4.1)	74 (3.2)	59 (3.7)	87 (3.1)	0.25	0.17
Personality disorders	44 (2.1)	96 (4.1)	84 (3.6)	92 (3.9)	51 (3.2)	74 (2.6)	0.84	0.009
Conduct disorders	34 (1.6)	40 (1.7)	37 (1.6)	53 (2.3)	34 (2.2)	55 (1.9)	0.14	0.49
Psychomotor agitation	25 (1.2)	34 (1.4)	42 (1.8)	54 (2.3)	33 (2.1)	49 (1.7)	0.04	0.17
Other behavioral problems	28 (1.3)	30 (1.3)	29 (1.3)	37 (1.6)	36 (2.3)	62 (2.2)	0.0006	0.13
Other	61 (2.9)	59 (2.5)	61 (2.6)	57 (2.4)	37 (2.3)	79 (2.8)	0.71	0.47
Boys								
<i>Total n. accesses</i>	1303	1492	1446	1424	943	1179		
Anxiety disorders	391 (30.0)	439 (29.4)	414 (28.6)	358 (25.1)	215 (22.8)	328 (27.8)	0.002	0.12
Alcohol and substance abuse	315 (24.2)	366 (24.5)	379 (26.2)	438 (30.8)	237 (25.1)	255 (21.6)	0.74	<0.0001
Psychosis	139 (10.7)	183 (12.3)	160 (11.0)	142 (10.0)	132 (14.0)	176 (14.9)	0.003	0.0001
Eating disorders	10 (0.8)	13 (0.9)	13 (0.9)	24 (1.7)	10 (1.1)	19 (1.6)	0.02	0.88
Adjustment (stress) disorders	82 (6.3)	88 (5.9)	106 (7.3)	77 (5.4)	53 (5.6)	61 (5.2)	0.14	0.86
Mood disorders	43 (3.3)	42 (2.8)	33 (2.0)	36 (2.5)	34 (3.6)	30 (2.5)	0.65	0.98
Self-harm	73 (5.6)	70 (4.7)	49 (3.4)	60 (4.2)	49 (5.2)	53 (4.5)	0.43	0.80
Psychosomatic disorders	28 (2.1)	54 (3.6)	69 (4.8)	45 (3.2)	32 (3.4)	38 (3.2)	0.48	0.93

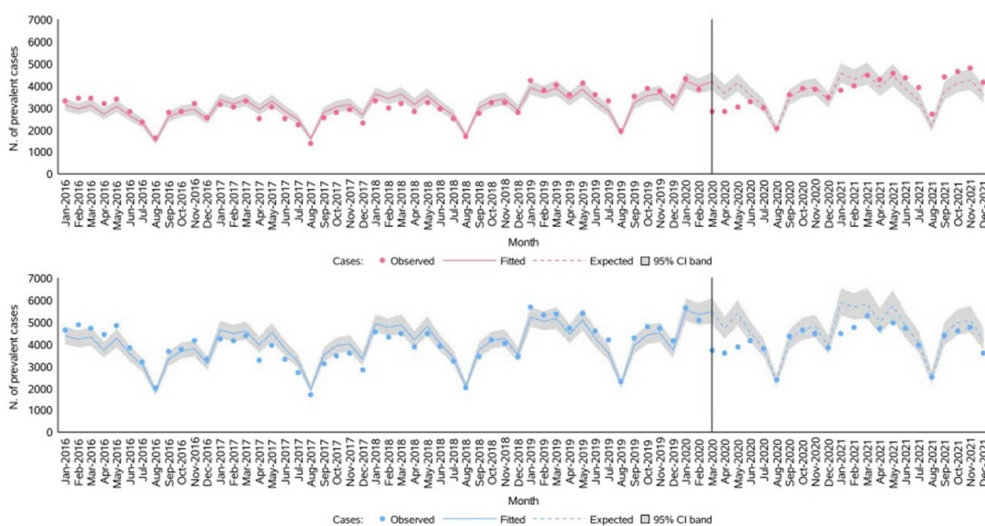
Personality disorders	41 (3.1)	47 (3.2)	48 (3.3)	28 (2.0)	11 (1.2)	16 (1.4)	<0.0001	0.29
Conduct disorders	51 (3.9)	50 (3.4)	57 (3.9)	52 (3.7)	54 (5.7)	52 (4.4)	0.07	0.38
Psychomotor agitation	33 (2.5)	37 (2.5)	32 (2.2)	47 (3.3)	20 (2.1)	38 (3.2)	0.29	0.91
Other behavioral problems	23 (1.6)	26 (1.7)	30 (2.1)	35 (2.5)	38 (4.0)	41 (3.5)	<0.0001	0.16
Other	56 (4.3)	53 (3.9)	59 (4.1)	53 (3.7)	28 (3.0)	57 (4.8)	0.79	0.19

Percentage estimated on the total number of accesses due to mental health conditions is reported in parentheses.

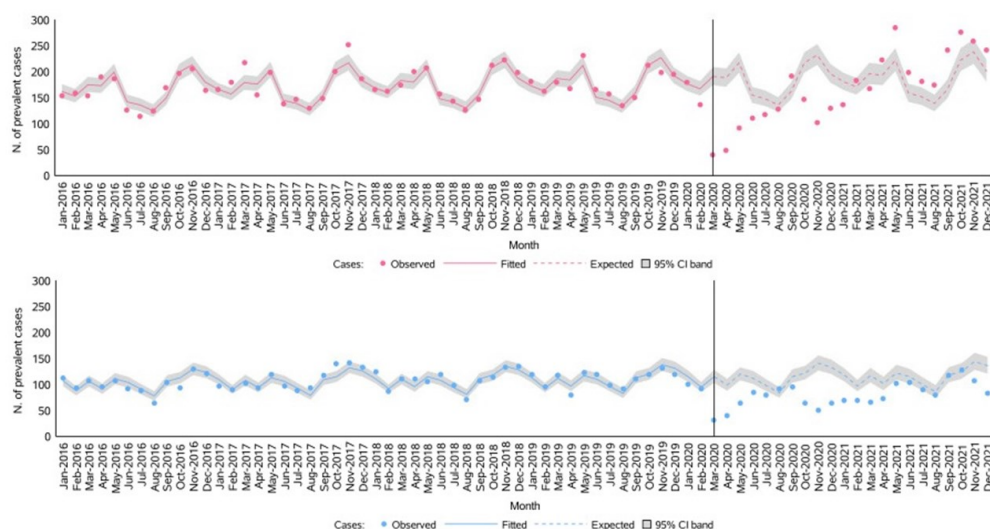
Supplemental Figure 1 – Monthly trend in the number of observed and expected cases with an overall healthcare service utilization.



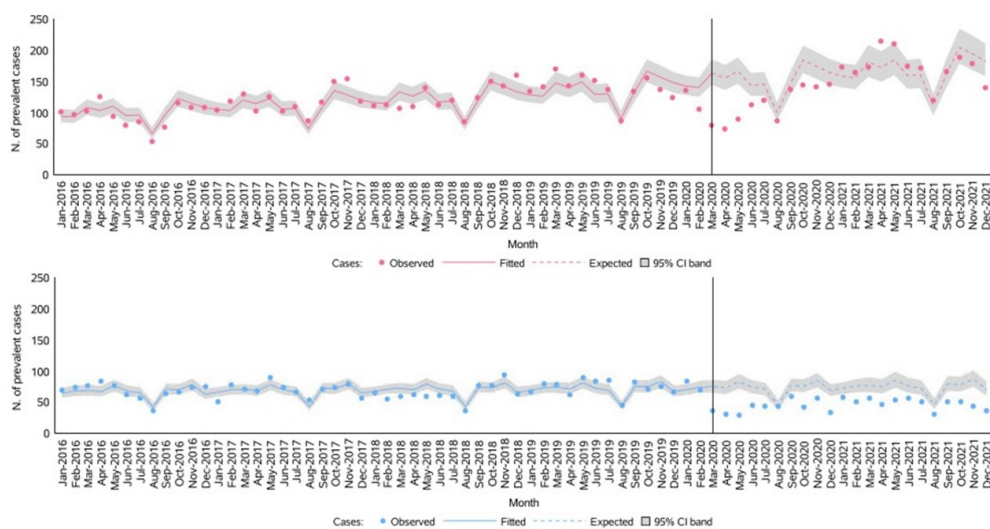
Supplemental Figure 2 – Monthly trend in the number of observed and expected cases with Child and Adolescent Mental Health Service visits.



Supplemental Figure 3 – Monthly trend in the number of observed and expected cases with Emergency Department accesses for mental disorders.



Supplemental Figure 4– Monthly trend in the number of observed and expected cases with hospital admissions for mental disorders.



Supplemental Figure 5 – Monthly trend in the number of observed and expected cases with psychotropic drug prescriptions.

